



**REGIONAL SPECIALISED METEOROLOGICAL CENTRE-TROPICAL CYCLONES, NEW DELHI
TROPICAL WEATHER OUTLOOK**

DEMS-RSMC SPECIAL TROPICAL CYCLONES NEW DELHI DATED 25.10.2023

FROM: RSMC –TROPICAL CYCLONES, NEW DELHI

**TO: STORM WARNING CENTRE, NAYPYI TAW (MYANMAR)
STORM WARNING CENTRE, BANGKOK (THAILAND)
STORM WARNING CENTRE, COLOMBO (SRILANKA)
STORM WARNING CENTRE, DHAKA (BANGLADESH)
STORM WARNING CENTRE, KARACHI (PAKISTAN)
METEOROLOGICAL OFFICE, MALE (MALDIVES)
OMAN METEOROLOGICAL DEPARTMENT, MUSCAT (THROUGH RTH JEDDAH)
YEMEN METEOROLOGICAL SERVICES, REPUBLIC OF YEMEN (THROUGH RTH JEDDAH)
NATIONAL CENTRE FOR METEOROLOGY, UAE (THROUGH RTH JEDDAH)
PRESIDENCY OF METEOROLOGY AND ENVIRONMENT, SAUDI ARABIA (THROUGH RTH JEDDAH)
IRAN METEOROLOGICAL ORGANISATION, (THROUGH RTH JEDDAH)
QATAR METEOROLOGICAL DEPARTMENT (THROUGH RTH JEDDAH)**

TROPICAL CYCLONE ADVISORY NO. 33 FOR NORTH INDIAN OCEAN (THE BAY OF BENGAL AND THE ARABIAN SEA) VALID FOR NEXT 120 HOURS ISSUED AT 0250 UTC OF 25.10.2023 BASED ON 0000 UTC OF 25.10.2023.

SUB: CYCLONIC STORM “HAMOON” (PRONOUNCED AS HAMOON) OVER COASTAL BANGLADESH

THE CYCLONIC STORM “HAMOON” (PRONOUNCED AS HAMOON) OVER COASTAL BANGLADESH MOVED NEARLY NORTHEASTWARDS WITH A SPEED OF 15 KMPH DURING PAST 6 HOURS AND LAY CENTRED AT 0000 UTC OF 25TH OCTOBER OVER COASTAL BANGLADESH NEAR LATITUDE 22.2°N AND LONGITUDE 92.2°E ABOUT 40 KM EAST-SOUTHEAST OF CHITTAGONG (BANGLADESH,41977).

IT IS VERY LIKELY TO MOVE NORTHEASTWARDS AND WEAKEN INTO A DEEP DEPRESSION DURING NEXT 06 HOURS AND FURTHER INTO A DEPRESSION DURING SUBSEQUENT 06 HOURS.

FORECAST TRACK AND INTENSITY ARE GIVEN BELOW:

DATE/TIME (UTC)	POSITION (LAT. °N/ LONG. °E)	MAXIMUM SUSTAINED SURFACE WIND SPEED (KMPH)	CATEGORY OF CYCLONIC DISTURBANCE
25.10.23/0000	22.2/92.2	60-70 GUSTING TO 80	CYCLONIC STORM
25.10.23/0600	22.8/92.7	50-60 GUSTING TO 70	DEEP DEPRESSION
25.10.23/1200	23.4/93.2	35-45 GUSTING TO 55	DEPRESSION
25.10.23/1800	24.0/93.7	25-35 GUSTING TO 45	WELL MARKED LOW PRESSURE AREA

AS PER INSAT 3D IMAGERY, ASSOCIATED BROKEN LOW TO MEDIUM CLOUDS WITH EMBEDDED MODERATE TO INTENSE CONVECTION LIES OVER BANGLADESH BETWEEN LAT 22.0N TO 29.0N LONG 92.0E TO 98.0E. MINIMUM CTT - 67 DEG CEL.

ASSOCIATED MAXIMUM SUSTAINED WIND SPEED IS 35 KNOTS GUSTING TO 45 KNOTS. THE ESTIMATED CENTRAL PRESSURE IS 1000 HPA.

(II) WIND WARNING (WARNING GRAPHICS ENCLOSED):

• NORTHEAST BAY OF BENGAL:

GALE WIND SPEED REACHING 60-70 KMPH GUSTING TO 80 KMPH IS PREVAILING AND LIKELY TO DECREASE GRADUALLY BECOMING SQUALLY WIND SPEED REACHING 45-55 KMPH GUSTING TO 65 KMPH BY 0600 UTC OF 25TH AND WOULD DECREASE THEREAFTER.

• NORTHWEST BAY OF BENGAL:

SQUALLY WIND SPEED REACHING 40-50 KMPH GUSTING TO 60 KMPH IS PREVAILING AND LIKELY TO CONTINUE DURING NEXT 06 HOURS AND DECREASE THEREAFTER.

• ADJOINING EASTCENTRAL BAY OF BENGAL: SQUALLY WIND SPEED REACHING 45-55 KMPH GUSTING TO 65 KMPH IS PREVAILING AND LIKELY TO CONTINUE DURING NEXT 06 HOURS AND DECREASE THEREAFTER.

• ALONG & OFF BANGLADESH AND NORTH MYANMAR COASTS:

GALE WIND SPEED REACHING 60-70 KMPH GUSTING TO 80 KMPH IS PREVAILING ALONG & OFF BANGLADESH AND ADJOINING NORTH MYANMAR COAST AND LIKELY TO DECREASE GRADUALLY BECOME SQUALLY WIND SPEED REACHING 40-50 KMPH GUSTING TO 60 KMPH BY 0600 UTC OF 25TH AND WOULD DECREASE FURTHER THEREAFTER.

SQUALLY WIND SPEED REACHING 50-60 KMPH GUSTING TO 70 KMPH LIKELY ALONG & OFF REMAINING PARTS OF NORTH MYANMAR COAST DURING THE SAME PERIOD AND DECREASE THEREAFTER.

MIZORAM, TRIPURA, SOUTH ASSAM AND MANIPUR:

SQUALLY WIND SPEED REACHING 30-40 KMPH GUSTING TO 50 KMPH IS LIKELY TO PREVAIL OVER MIZORAM AND TRIPURA AND STRONG WIND SPEED REACHING 25-35 KMPH GUSTING TO 45 KMPH OVER SOUTH ASSAM & MANIPUR ON 25TH

OCTOBER.

(III) SEA CONDITION

- **NORTHEAST BAY OF BENGAL AND ALONG & OFF BANGLADESH & ADJOINING NORTH MYANMAR COASTS:**
HIGH SEA CONDITION IS PREVAILING AND LIKELY TO CONTINUE DURING NEXT 06 HOURS AND WOULD BECOME VERY ROUGH TO ROUGH THEREAFTER FOR SUBSEQUENT 06 HOURS.
- **NORTHWEST BAY OF BENGAL:**
ROUGH SEA CONDITIONS ARE PREVAILING AND LIKELY TO DURING NEXT 06 HOURS.
- **ADJOINING EASTCENTRAL BAY OF BENGAL: VERY ROUGH TO ROUGH SEA CONDITION IS PREVAILING LIKELY TO BECOME ROUGH DURING NEXT 06 HOURS IMPROVE THEREAFTER.**

**(IV) FISHERMEN WARNING (GRAPHICS ATTACHED):
FISHERMEN ARE ADVISED NOT TO VENTURE INTO**

- ❖ NORTHEAST BAY OF BENGAL AND ALONG & OFF BANGLADESH & NORTH MYANMAR COASTS TILL 25TH OCTOBER.
- ❖ ADJOINING AREAS OF NORTHWEST BAY OF BENGAL, SYSTEM IS UNDER CONTINUOUS SURVEILLANCE

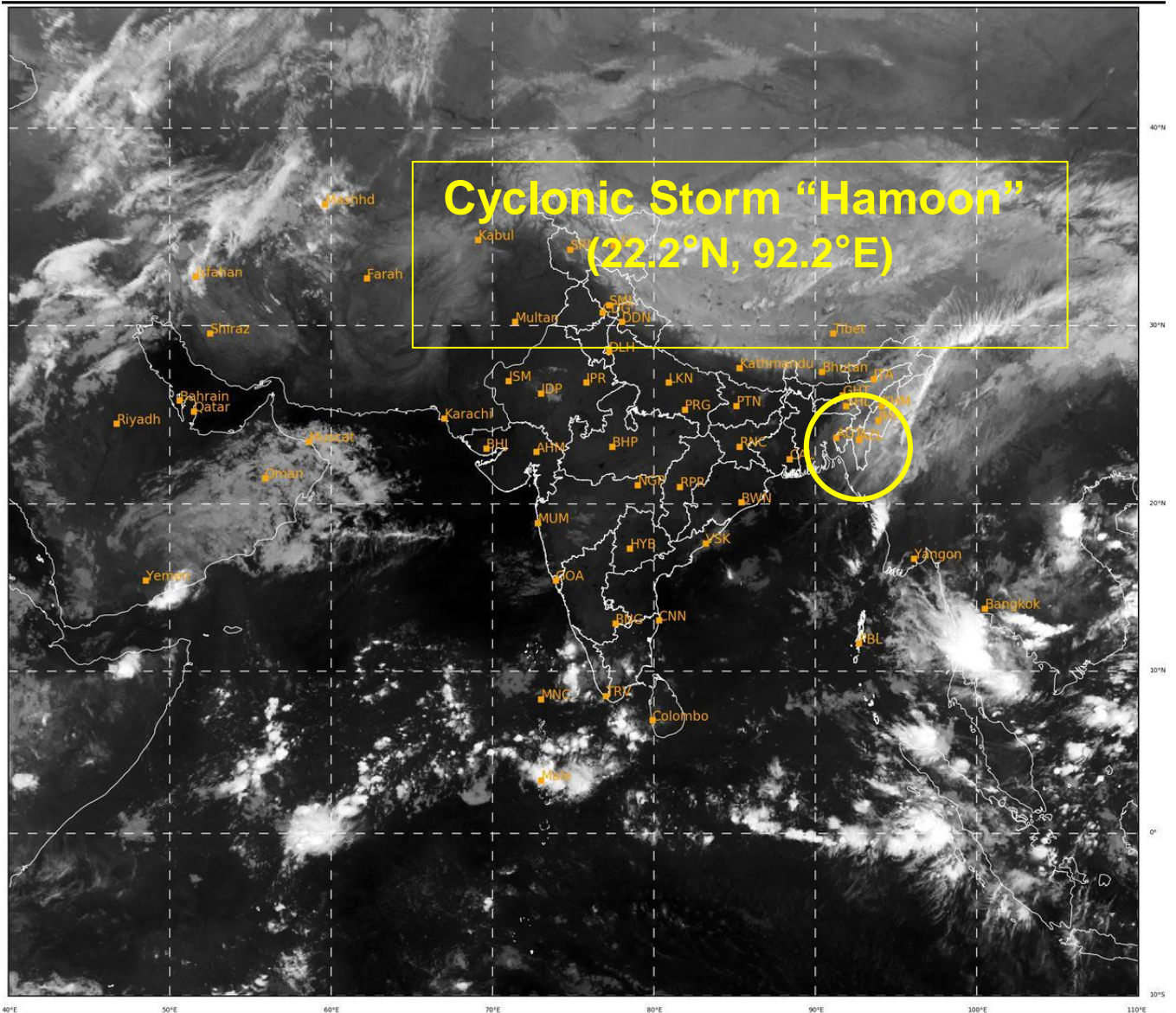
REMARKS:

BAY OF BENGAL:

SEA SURFACE TEMPERATURE IS 28-30°C OVER NORTH BAY OF BENGAL. THE LOW LEVEL POSITIVE VORTICITY HAS DECREASED IN PAST 03 HOURS AND IS AROUND $80 \times 10^{-6} \text{S}^{-1}$ TO THE SOUTH OF SYSTEM CENTER. THE LOW LEVEL CONVERGENCE HAS DECREASED FURTHER AND IS ABOUT $10 \times 10^{-5} \text{S}^{-1}$ TO THE SOUTHEAST OF SYSTEM CENTRE. UPPER LEVEL DIVERGENCE HAS DECREASED AND IS ABOUT $10 \times 10^{-5} \text{S}^{-1}$ ALONG THE FORECAST TRACK OF SYSTEM. IT IS NORTHEAST-SOUTHWEST ORIENTED. THE SYSTEM HAS ENTERED INTO A ZONE OF HIGH (> 40 KNOTS) WIND SHEAR. THE SYSTEM IS MOVING FASTER AND ALSO EXPECTED TO MOVE FAST UNDER THE INFLUENCE OF UPPER TROPOSPHERIC WESTERLY TROUGH LYING TO THE WEST OF THE SYSTEM OVER CENTRAL AND NORTH INDIA.

IT IS VERY LIKELY TO MOVE NORTHEASTWARDS AND WEAKEN INTO A DEEP DEPRESSION DURING NEXT 06 HOURS AND FURTHER INTO A DEPRESSION DURING SUBSEQUENT 06 HOURS.

(TRISANU BANIK)
SCIENTIST-C
RSMC, NEW DELHI



535

929

IMD, DELHI

Cloud distribution: (a) Isolated: <25%, Scattered:25-50%, Broken: 51-75%, Solid:>75%, Convection Intensity: (a) Weak: Cloud Top Temperature (CTT) >-25°C, (b) Moderate: CTT: - 25°C to -40°C, (c) Intense: CTT: - 41°C to -70°C and (d) Very Intense: : Less than -70°C
PROBABILITY OF CYCLOGENESIS (FORMATION OF DEPRESSION):NIL: 0%, LOW: 1-33%, , MODERATE: 34-66% AND HIGH: 67-100%
This is a guidance Bulletin for WMO/ESCAP Panel Member countries. Visit respective National websites for Country specific Bulletins



OBSERVED AND FORECAST TRACK ALONGWITH CONE OF UNCERTAINTY OF CYCLONIC STORM "HAMOON" OVER COASTAL BANGLADESH BASED ON 0000 UTC (0530 IST) OF 25TH OCTOBER 2023.



DATE/TIME IN UTC

IST=UTC + 0530

L: LOW PRESSURE AREA

WML: WELL MARKED LOW PRESSURE AREA

D: DEPRESSION (17-27 KT)

DD: DEEP DEPRESSION (28-33 KT)

CS: CYCLONIC STORM (34-47 KT)

SCS: SEVERE CYCLONIC STORM (48-63KT)

VSCS: VERY SEVERE CYCLONIC STORM (64-89 KT)

ESCS: EXTREMELY SEVERE CYCLONIC STORM (90-119 KT)

SuCS: SUPER CYCLONIC STORM (\geq 120 KT)

● LESS THAN 34 KT

○ 34-47 KT

○ \geq 48 KT

— OBSERVED TRACK

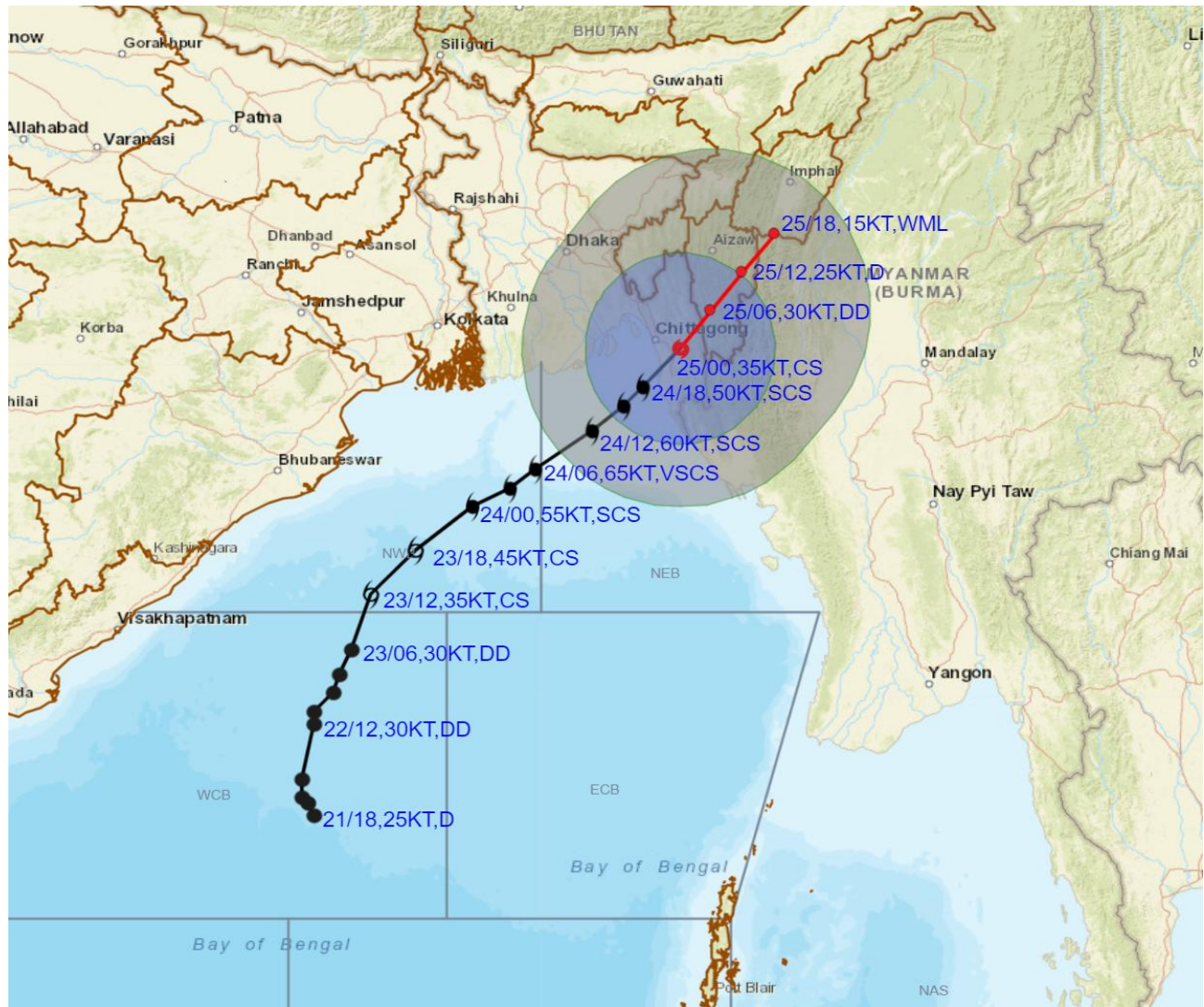
— FORECAST TRACK

▲ CONE OF UNCERTAINTY

Cloud distribution: (a) Isolated: <25%, Scattered:25-50%, Broken: 51-75%, Solid:>75%, Convection Intensity: (a) Weak: Cloud Top Temperature (CTT) >25°C, (b) Moderate: CTT: - 25°C to -40°C, (c) Intense: CTT: - 41°C to -70°C and (d) Very Intense: : Less than -70°C
 PROBABILITY OF CYCLOGENESIS (FORMATION OF DEPRESSION):NIL: 0%, LOW: 1-33%, , MODERATE: 34-66% AND HIGH: 67-100%
 This is a guidance Bulletin for WMO/ESCAP Panel Member countries. Visit respective National websites for Country specific Bulletins



OBSERVED AND FORECAST TRACK ALONGWITH QUADRANT WIND DISTRIBUTION OF SEVERE CYCLONIC STORM "HAMOON" OVER COASTAL BANGLADESH BASED ON 0000 UTC (0530 IST) OF 25TH OCTOBER 2023.



DATE/TIME IN UTC

IST=UTC + 0530

L: LOW PRESSURE AREA

WML: WELL MARKED LOW PRESSURE AREA

D: DEPRESSION (17-27 KT)

DD: DEEP DEPRESSION (28-33 KT)

CS: CYCLONIC STORM (34-47 KT)

SCS: SEVERE CYCLONIC STORM (48-63KT)

VSCS: VERY SEVERE CYCLONIC STORM (64-89 KT)

ESCS: EXTREMELY SEVERE CYCLONIC STORM (90-119 KT)

SuCS: SUPER CYCLONIC STORM (≥ 120 KT)

- LESS THAN 34 KT
- 34-47 KT
- ≥ 48 KT
- OBSERVED TRACK
- FORECAST TRACK
- CONE OF UNCERTAINTY
- AREA OF MAXIMUM SUSTAINED WIND SPEED:
- 28-33 KT (52-61 KMPH)
- 34-49 KT (62-91 KMPH)
- 50-63 KT (92-117 KMPH)
- ≥ 64 KT (≥ 118 KMPH)

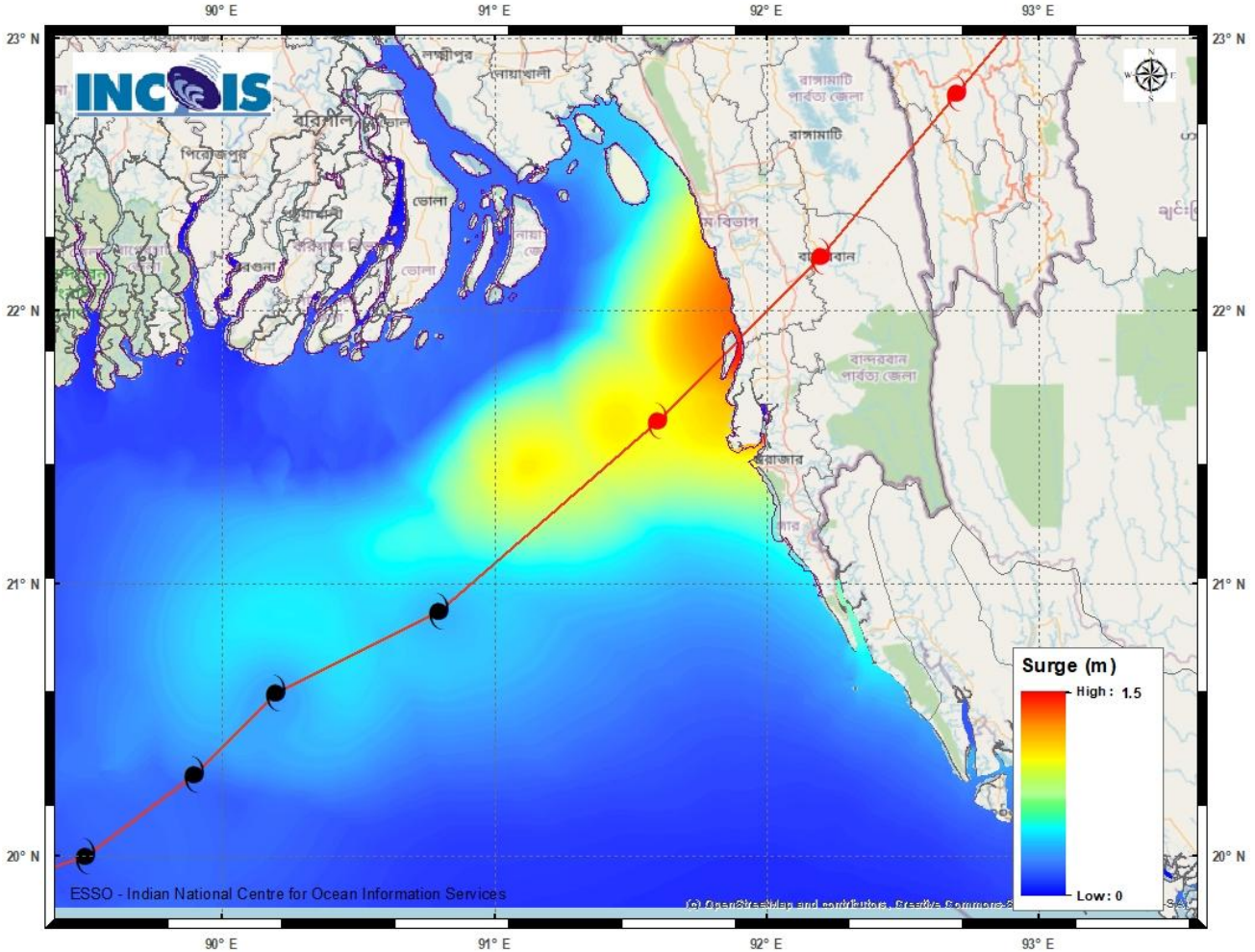
IMPACT OVER THE SEA

MSW (knot/kmph)	Impact	Action
28-33 (52-61)	Very rough seas	Total suspension of fishing operations
34-49 (62-91)	High to very high seas	Total suspension of fishing operations
50-63 (92-117)	Very high seas	Total suspension of fishing operations
≥ 64 (≥ 118)	Phenomenal	Total suspension of fishing operations

Cloud distribution: (a) Isolated: <25%, Scattered:25-50%, Broken: 51-75%, Solid:>75%, Convection Intensity: (a) Weak: Cloud Top Temperature (CTT) >-25°C, (b) Moderate: CTT: - 25°C to -40°C, (c) Intense: CTT: - 41°C to -70°C and (d) Very Intense: : Less than -70°C
PROBABILITY OF CYCLOGENESIS (FORMATION OF DEPRESSION):NIL: 0%, LOW: 1-33%, , MODERATE: 34-66% AND HIGH: 67-100%
 This is a guidance Bulletin for WMO/ESCAP Panel Member countries. Visit respective National websites for Country specific Bulletins

STORM SURGE GUIDANCE FOR BANGLADESH:

Storm surge of about 1.0-1.5 metre height above the astronomical tide is likely to inundate low lying areas between Khepupara and Chittagong (Bangladesh) around the time of landfall.



Cloud distribution: (a) Isolated: <25%, Scattered:25-50%, Broken: 51-75%, Solid:>75%, Convection Intensity: (a) Weak: Cloud Top Temperature (CTT) >-25°C, (b) Moderate: CTT: - 25°C to -40°C, (c) Intense: CTT: - 41°C to -70°C and (d) Very Intense: : Less than -70°C
PROBABILITY OF CYCLOGENESIS (FORMATION OF DEPRESSION):NIL: 0%, LOW: 1-33%, , MODERATE: 34-66% AND HIGH: 67-100%
This is a guidance Bulletin for WMO/ESCAP Panel Member countries. Visit respective National websites for Country specific Bulletins

Fishermen warning graphics



	Squally WX with wind speed 40-45 kmph gusting to 55 kmph
	Squally WX with wind speed 45-55 kmph gusting to 65 kmph
	Squally wind with speed 50-60 kmph gusting to 70 kmph
	CS with Gale wind speed 60-90 kmph gusting to 110 kmph
	SCS with Gale wind speed 90-110 kmph gusting to 120 kmph

Fishermen are advised not to venture into the marked areas.

Cloud distribution: (a) Isolated: <25%, Scattered:25-50%, Broken: 51-75%, Solid:>75%, Convection Intensity: (a) Weak: Cloud Top Temperature (CTT) >-25°C, (b) Moderate: CTT: - 25°C to -40°C, (c) Intense: CTT: - 41°C to -70°C and (d) Very Intense: : Less than -70°C
 PROBABILITY OF CYCLOGENESIS (FORMATION OF DEPRESSION):NIL: 0%, LOW: 1-33%, , MODERATE: 34-66% AND HIGH: 67-100%
 This is a guidance Bulletin for WMO/ESCAP Panel Member countries. Visit respective National websites for Country specific Bulletins